

# 检测报告 Test Report

报告编号 SCL01J030211003E  
Report No. SCL01J030211003E

第 1 页 共 7 页  
Page 1 of 7

申请单位 东莞市欣永电子科技有限公司  
Applicant DONGGUAN GLADSUM ELECTRONICS CO.,LTD  
地 址 广东省东莞市桥头镇宏达七八号  
Address NO. EIGHT SEVEN HONGDA STREE QIAOTOU TOWN ,DONGUAN CITY  
GUANGDONG PROVINCE CHINA

以下测试之样品及样品信息由申请者提供并确认

The following sample(s) and sample information was/were submitted and identified by/on the behalf of the client

样品名称 Sample Name	磁棒线圈电感 Rod core choke
客户参考信息 Client Reference Information	R, AL, AR KR, KL , , DL, DR, EL, ER series R,AL, AR KR,KL ,,DL,DR,EL,ER series
样品接收日期 Sample Received Date	2017. 05. 17 May 17, 2017
样品检测日期 Testing Period	2017. 05. 17—2017. 05. 19 May 17, 2017 to May 19, 2017

检测要求  
Test Requested 请参见下页。  
Please refer to the following page(s).

检测依据/检测结果  
Test Method/Test Result(s) 请参见下页。  
Please refer to the following page(s).

主 检 刘金秀

Tested by

批 准 郑晴涛

Approved by

郑晴涛

技术经理 Technical Manager

华测检测认证集团股份有限公司

Centre Testing International Group Co.,Ltd.

审 核 夏建

Reviewed by

日 期

Date

2017.05.19

No. R169561356

广东省深圳市宝安区 70 区鸿威工业园

Hongwei Industrial Zone, Bao'an 70 District, Shenzhen, Guangdong, China

# 检测报告

## Test Report

报告编号 SCL01J030211003E

第 2 页 共 7 页

Report No. SCL01J030211003E

Page 2 of 7

### 检测要求

根据客户要求, 对所提交样品中的铅(Pb), 镉(Cd), 汞(Hg), 六价铬(Cr(VI)), 多溴联苯(PBBs), 多溴二苯醚(PBDEs), 邻苯二甲酸酯(DBP, BBP, DEHP, DIBP)进行测试。

### Test Requested

As specified by client, to test Lead (Pb), Cadmium (Cd), Mercury (Hg), Hexavalent Chromium(Cr(VI)), Polybrominated Biphenyls(PBBs), Polybrominated Diphenyl Ethers(PBDEs), Phthalates(DBP, BBP, DEHP, DIBP) in the submitted sample(s).

### 检测依据 Test Method

测试项目 Test Item(s)	测试方法 Test Method	测试仪器 Measured Equipment(s)
铅(Pb) Lead (Pb)	IEC 62321-5:2013 Ed. 1.0	ICP-OES
镉(Cd) Cadmium (Cd)	IEC 62321-5:2013 Ed. 1.0	ICP-OES
汞(Hg) Mercury (Hg)	IEC 62321-4:2013 Ed. 1.0	ICP-OES
六价铬(Cr(VI)) Hexavalent Chromium(Cr(VI))	IEC 62321:2008 Ed. 1 Annex C	UV-Vis
多溴联苯(PBBs) Polybrominated Biphenyls(PBBs)	IEC 62321-6:2015	GC-MS
多溴二苯醚(PBDEs) Polybrominated Diphenyl Ethers(PBDEs)	IEC 62321-6:2015	GC-MS
邻苯二甲酸酯(DBP, BBP, DEHP, DIBP) Phthalates(DBP, BBP, DEHP, DIBP)	参考IEC 62321-8 CDV Refer to IEC 62321-8 CDV	GC-MS

# 检测报告

## Test Report

报告编号 SCL01J030211003E  
Report No. SCL01J030211003E

第 3 页 共 7 页  
Page 3 of 7

### 检测结果 Test Result(s)

测试项目 Tested Item(s)	结果 Result	方法检出限 MDL
铅 (Pb) Lead (Pb)	N.D.	2 mg/kg
镉 (Cd) Cadmium (Cd)	N.D.	2 mg/kg
汞 (Hg) Mercury (Hg)	N.D.	2 mg/kg
六价铬 (Cr(VI)) Hexavalent Chromium (Cr(VI))	N.D.	2 mg/kg

测试项目 Tested Item(s)	结果 Result	方法检出限 MDL
<b>多溴联苯 (PBBs) Polybrominated Biphenyls(PBBs)</b>		
一溴联苯 Monobromobiphenyl	N.D.	5 mg/kg
二溴联苯 Dibromobiphenyl	N.D.	5 mg/kg
三溴联苯 Tribromobiphenyl	N.D.	5 mg/kg
四溴联苯 Tetrabromobiphenyl	N.D.	5 mg/kg
五溴联苯 Pentabromobiphenyl	N.D.	5 mg/kg
六溴联苯 Hexabromobiphenyl	N.D.	5 mg/kg
七溴联苯 Heptabromobiphenyl	N.D.	5 mg/kg
八溴联苯 Octabromobiphenyl	N.D.	5 mg/kg
九溴联苯 Nonabromobiphenyl	N.D.	5 mg/kg
十溴联苯 Decabromobiphenyl	N.D.	5 mg/kg

测试项目 Tested Item(s)	结果 Result	方法检出限 MDL
<b>多溴二苯醚 (PBDEs) Polybrominated Diphenyl Ethers(PBDEs)</b>		
一溴二苯醚 Monobromodiphenyl ether	N.D.	5 mg/kg
二溴二苯醚 Dibromodiphenyl ether	N.D.	5 mg/kg
三溴二苯醚 Tribromodiphenyl ether	N.D.	5 mg/kg
四溴二苯醚 Tetrabromodiphenyl ether	N.D.	5 mg/kg
五溴二苯醚 Pentabromodiphenyl ether	N.D.	5 mg/kg
六溴二苯醚 Hexabromodiphenyl ether	N.D.	5 mg/kg
七溴二苯醚 Heptabromodiphenyl ether	N.D.	5 mg/kg
八溴二苯醚 Octabromodiphenyl ether	N.D.	5 mg/kg
九溴二苯醚 Nonabromodiphenyl ether	N.D.	5 mg/kg
十溴二苯醚 Decabromodiphenyl ether	N.D.	5 mg/kg

# 检测报告

## Test Report

报告编号 SCL01J030211003E  
Report No. SCL01J030211003E

第 4 页 共 7 页  
Page 4 of 7

测试项目 Tested Item(s)	结果 Result	方法检出限 MDL
<b>邻苯二甲酸酯 Phthalates</b>		
邻苯二甲酸二正丁酯(DBP) Dibutyl phthalate(DBP) CAS#:84-74-2	N.D.	50 mg/kg
邻苯二甲酸丁基苄酯(BBP) Butylbenzyl phthalate(BBP) CAS#:85-68-7	N.D.	50 mg/kg
邻苯二甲酸二(2-乙基己基)酯(DEHP) Di-2-ethylhexyl phthalate(DEHP) CAS#:117-81-7	N.D.	50 mg/kg
邻苯二甲酸二异丁酯(DIBP) Diisobutyl phthalate(DIBP) CAS#:84-69-5	N.D.	50 mg/kg

测试样品/部位描述 电感 (整体混合测试)  
Tested Sample/Part Description Inductor(Mix all)

备注: -对于检测铅, 镉, 汞之样品已完全溶解。  
-根据客户要求, 对样品进行整体混合测试, 测试结果不代表样品中任何一种单一材质的含量。  
-N.D. = 未检出 (小于方法检出限)  
-mg/kg = ppm = 百万分之一

Remark: -The sample(s) had been dissolved totally tested for Lead, Cadmium, Mercury.  
-As specified by client, the test was conducted by mixing all materials together.  
The result(s) shown on this report may be different from the content of any homogeneous material.  
-MDL = Method Detection Limit  
-N.D. = Not Detected (<MDL)  
-mg/kg = ppm = parts per million

注释: 本报告中的数据结果供科研、教学、企业内部质量控制、企业产品研发等目的用。

Note: The testing data and result(s) in this report is(are) just for scientific research, education, internal quality control and product development etc.

# 检测报告

## Test Report

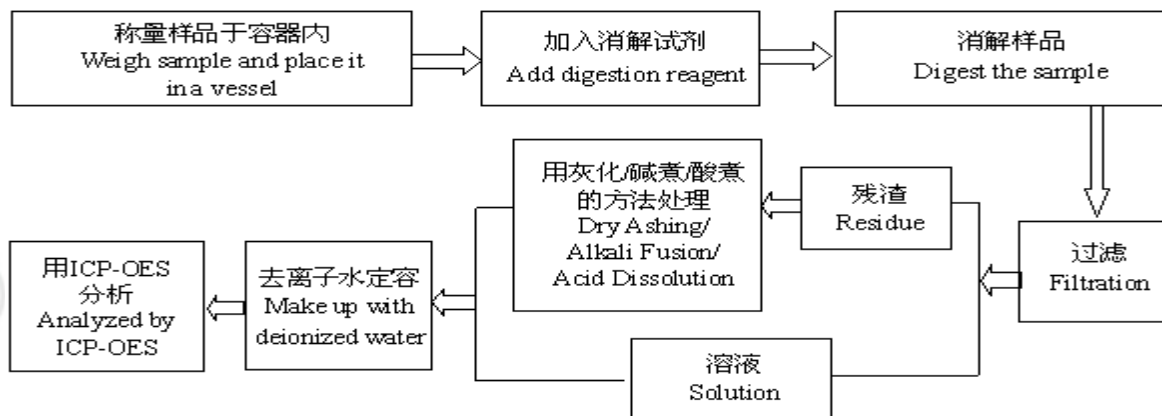
报告编号 SCL01J030211003E  
Report No. SCL01J030211003E

第 5 页 共 7 页  
Page 5 of 7

### 检测流程 Test Process

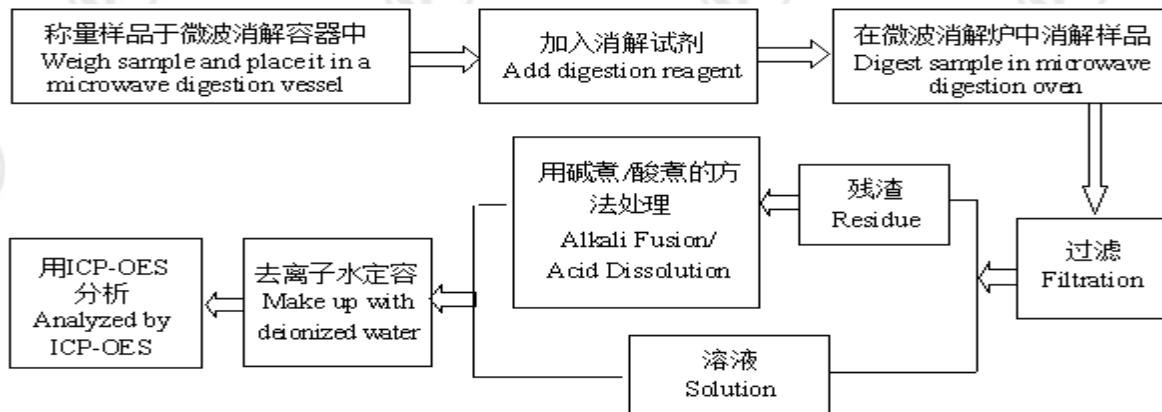
#### 1. 铅 (Pb), 镉 (Cd)

##### Lead (Pb), Cadmium (Cd)



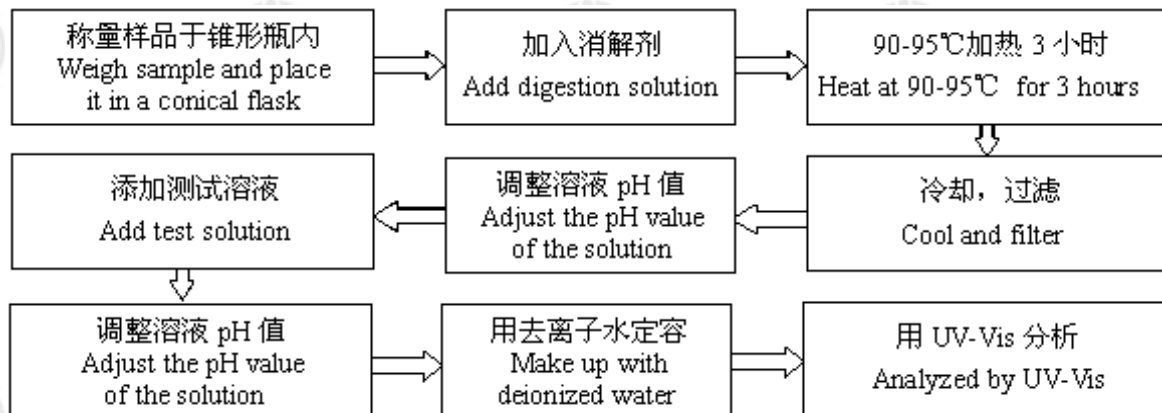
#### 2. 汞 (Hg)

##### Mercury (Hg)



#### 3. 六价铬 (Cr (VI))

##### Hexavalent Chromium (Cr(VI))



# 检测报告 Test Report

报告编号 SCL01J030211003E

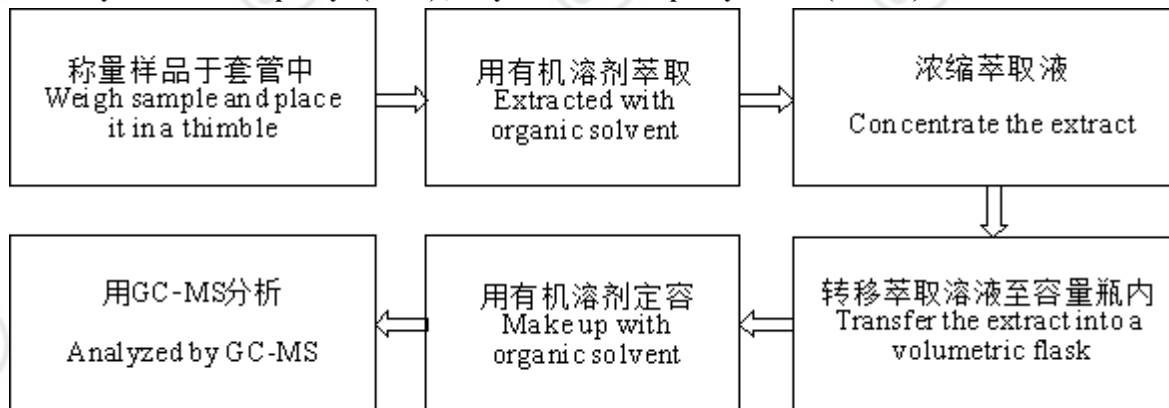
第 6 页 共 7 页

Report No. SCL01J030211003E

Page 6 of 7

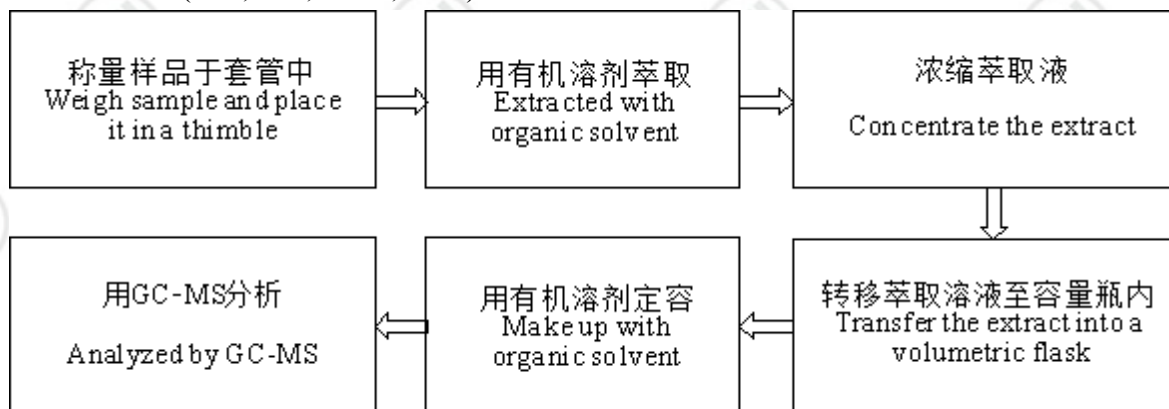
## 4. 多溴联苯(PBBs), 多溴二苯醚(PBDEs)

Polybrominated Biphenyls(PBBs) , Polybrominated Diphenyl Ethers(PBDEs)



## 5. 邻苯二甲酸酯(DBP, BBP, DEHP, DIBP)

Phthalates(DBP, BBP, DEHP, DIBP)

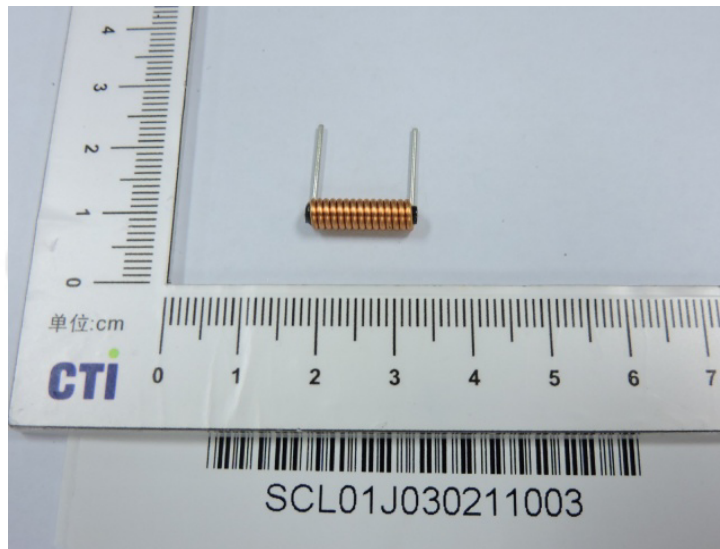


# 检测报告 Test Report

报告编号 SCL01J030211003E  
Report No. SCL01J030211003E

第 7 页 共 7 页  
Page 7 of 7

## 样品图片 Photo(s) of the sample(s)



\*\*\*报告结束\*\*\*

\*\*\* End of report \*\*\*

检测报告无批准人签字及加盖公司报告章无效，本报告检测结果仅对受测样品负责。未经CTI书面同意，不得部分复制本报告。

The test report is effective only with both signature and specialized stamp. The result(s) shown in this report refer only to the sample(s) tested. Without written approval of CTI, this report can't be reproduced except in full.