

# 检测报告 Test Report

报告编号 SCL011029118002E  
Report No. SCL011029118002E

第 1 页 共 7 页  
Page 1 of 7

申请单位 东莞市欣永电子科技有限公司  
Applicant DONGGUAN GLADSUM ELECTRONICS CO.,LTD  
地 址 广东省东莞市桥头镇邵岗头管理区  
Address SHAOGANGTOU INDUSTRIAL AREA, QIAO TOU TOWN,DONGGUAN  
CITY GUANGDONG PROVINCE, CHINA

以下测试之样品及样品信息由申请者提供并确认

The following sample(s) and sample information was/were submitted and identified by/on the behalf of the client

样品名称 SMD power inductor  
Sample Name 贴片功率电感  
客户参考信息 CD, CDRH, NR, CDR, D,  
Client Reference Information CD, CDRH, NR, CDR, D,  
样品接收日期 2016. 04. 15  
Sample Received Date Apr. 15, 2016  
样品检测日期 2016. 04. 15—2016. 04. 19  
Testing Period Apr. 15, 2016 to Apr. 19, 2016

检测要求 请参见下页。  
Test Requested Please refer to the following page(s).

检测依据/检测结果 请参见下页。  
Test Method/Test Result(s) Please refer to the following page(s).

主 检 刘前生

Tested by

批准

approved by

刘少蔚

技术经理 Technical Manager

华测检测认证集团股份有限公司  
Centre Testing International Group Co.,Ltd.

审 核

Reviewed by

日 期

Date

2016.04.19

No. R185019250

广东省深圳市宝安区 70 区鸿威工业园  
Hongwei Industrial Zone, Bao'an 70 District, Shenzhen, Guangdong, China

# 检测报告

## Test Report

报告编号 SCL011029118002E

第 2 页 共 7 页

Report No. SCL011029118002E

Page 2 of 7

### 检测要求

根据客户要求, 对所提交样品中的铅(Pb), 镉(Cd), 汞(Hg), 六价铬(Cr(VI)), 多溴联苯(PBBs), 多溴二苯醚(PBDEs), 邻苯二甲酸酯(DBP, BBP, DEHP, DIBP)进行测试。

### Test Requested

As specified by client, to test Lead (Pb), Cadmium (Cd), Mercury (Hg), Hexavalent Chromium(Cr(VI)), Polybrominated Biphenyls(PBBs), Polybrominated Diphenyl Ethers(PBDEs), Phthalates(DBP, BBP, DEHP, DIBP) in the submitted sample(s).

### 检测依据 Test Method

测试项目 Test Item(s)	测试方法 Test Method	测试仪器 Measured Equipment(s)
铅(Pb) Lead (Pb)	IEC 62321-5:2013 Ed. 1.0	ICP-OES
镉(Cd) Cadmium (Cd)	IEC 62321-5:2013 Ed. 1.0	ICP-OES
汞(Hg) Mercury (Hg)	IEC 62321-4:2013 Ed. 1.0	ICP-OES
六价铬(Cr(VI)) Hexavalent Chromium(Cr(VI))	IEC 62321:2008 Ed. 1 Annex C	UV-Vis
多溴联苯(PBBs) Polybrominated Biphenyls(PBBs)	IEC 62321-6:2015	GC-MS
多溴二苯醚(PBDEs) Polybrominated Diphenyl Ethers(PBDEs)	IEC 62321-6:2015	GC-MS
邻苯二甲酸酯(DBP, BBP, DEHP, DIBP) Phthalates(DBP, BBP, DEHP, DIBP)	参考EN 14372:2004(E) Refer to EN 14372:2004(E)	GC-MS

# 检测报告

## Test Report

报告编号 SCL011029118002E  
Report No. SCL011029118002E

第 3 页 共 7 页  
Page 3 of 7

### 检测结果 Test Result(s)

测试项目 Tested Item(s)	结果 Result	方法检出限 MDL
铅 (Pb) Lead (Pb)	N.D.	2 mg/kg
镉 (Cd) Cadmium (Cd)	N.D.	2 mg/kg
汞 (Hg) Mercury (Hg)	N.D.	2 mg/kg
六价铬 (Cr(VI)) Hexavalent Chromium (Cr(VI))	N.D.	2 mg/kg

测试项目 Tested Item(s)	结果 Result	方法检出限 MDL
<b>多溴联苯 (PBBs) Polybrominated Biphenyls(PBBs)</b>		
一溴联苯 Monobromobiphenyl	N.D.	5 mg/kg
二溴联苯 Dibromobiphenyl	N.D.	5 mg/kg
三溴联苯 Tribromobiphenyl	N.D.	5 mg/kg
四溴联苯 Tetrabromobiphenyl	N.D.	5 mg/kg
五溴联苯 Pentabromobiphenyl	N.D.	5 mg/kg
六溴联苯 Hexabromobiphenyl	N.D.	5 mg/kg
七溴联苯 Heptabromobiphenyl	N.D.	5 mg/kg
八溴联苯 Octabromobiphenyl	N.D.	5 mg/kg
九溴联苯 Nonabromobiphenyl	N.D.	5 mg/kg
十溴联苯 Decabromobiphenyl	N.D.	5 mg/kg

测试项目 Tested Item(s)	结果 Result	方法检出限 MDL
<b>多溴二苯醚 (PBDEs) Polybrominated Diphenyl Ethers(PBDEs)</b>		
一溴二苯醚 Monobromodiphenyl ether	N.D.	5 mg/kg
二溴二苯醚 Dibromodiphenyl ether	N.D.	5 mg/kg
三溴二苯醚 Tribromodiphenyl ether	N.D.	5 mg/kg
四溴二苯醚 Tetrabromodiphenyl ether	N.D.	5 mg/kg
五溴二苯醚 Pentabromodiphenyl ether	N.D.	5 mg/kg
六溴二苯醚 Hexabromodiphenyl ether	N.D.	5 mg/kg
七溴二苯醚 Heptabromodiphenyl ether	N.D.	5 mg/kg
八溴二苯醚 Octabromodiphenyl ether	N.D.	5 mg/kg
九溴二苯醚 Nonabromodiphenyl ether	N.D.	5 mg/kg
十溴二苯醚 Decabromodiphenyl ether	N.D.	5 mg/kg

# 检测报告

## Test Report

报告编号 SCL01I029118002E  
Report No. SCL01I029118002E

第 4 页 共 7 页  
Page 4 of 7

测试项目 Tested Item(s)	结果 Result	方法检出限 MDL
<b>邻苯二甲酸酯 Phthalates</b>		
邻苯二甲酸二正丁酯 (DBP) Dibutyl phthalate (DBP) CAS#:84-74-2	N.D.	50 mg/kg
邻苯二甲酸丁基苄酯 (BBP) Butylbenzyl phthalate (BBP) CAS#:85-68-7	N.D.	50 mg/kg
邻苯二甲酸二(2-乙基己基)酯 (DEHP) Di-2-ethylhexyl phthalate (DEHP) CAS#:117-81-7	N.D.	50 mg/kg
邻苯二甲酸二异丁酯 (DIBP) Diisobutyl phthalate (DIBP) CAS#:84-69-5	N.D.	50 mg/kg

**测试样品/部位描述**

贴片电感 (整体混合测试)

**Tested Sample/Part Description**

SMD Inductor (Mix all)

**备注:**

- 对于检测铅, 镉, 汞之样品已完全溶解。
- 根据客户要求, 对样品进行整体混合测试, 测试结果不代表样品中任何一种单一材质的含量。
- N.D. = 未检出 (小于方法检出限)
- mg/kg = ppm = 百万分之一

**Remark:**

- The sample(s) had been dissolved totally tested for Lead, Cadmium, Mercury.
- As specified by client, the test was conducted by mixing all materials together.
- The result(s) shown on this report may be different from the content of any homogeneous material.
- MDL = Method Detection Limit
- N.D. = Not Detected (<MDL)
- mg/kg = ppm = parts per million

# 检测报告

## Test Report

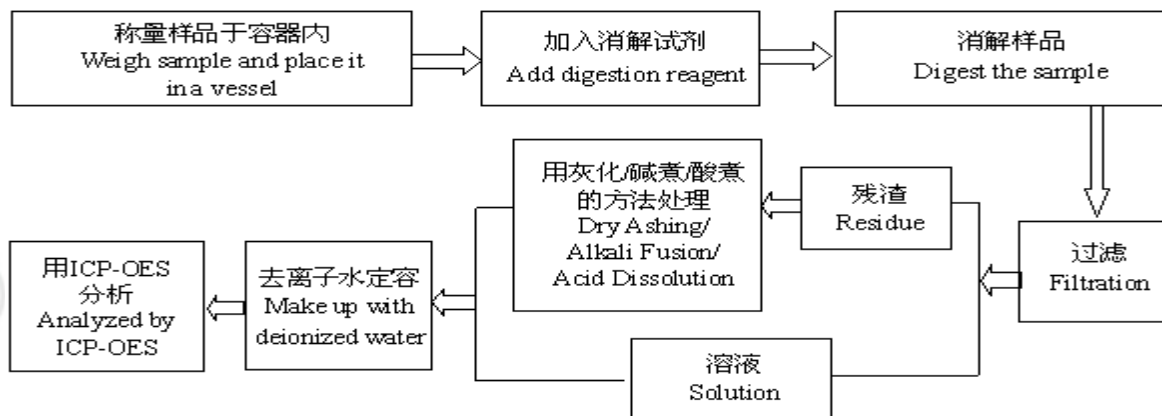
报告编号 SCL011029118002E  
Report No. SCL011029118002E

第 5 页 共 7 页  
Page 5 of 7

### 检测流程 Test Process

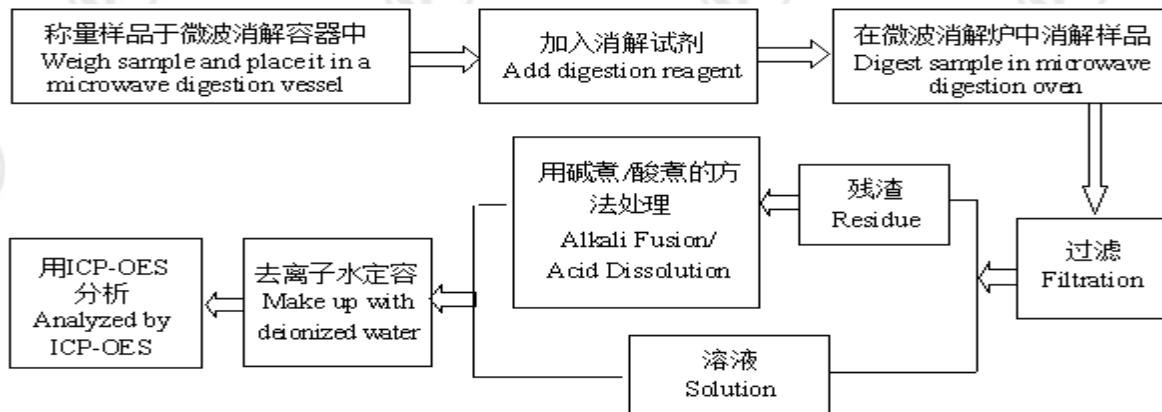
#### 1. 铅 (Pb), 镉 (Cd)

##### Lead (Pb), Cadmium (Cd)



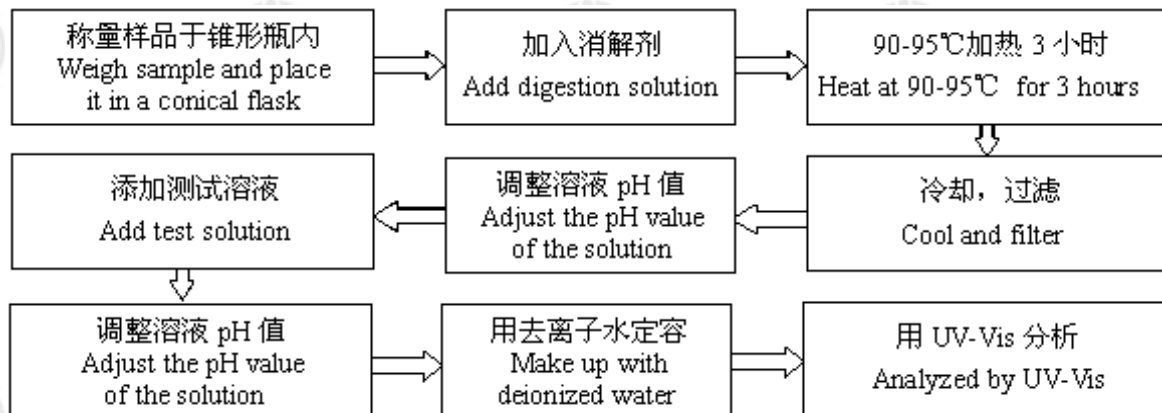
#### 2. 汞 (Hg)

##### Mercury (Hg)



#### 3. 六价铬 (Cr (VI))

##### Hexavalent Chromium (Cr(VI))



# 检测报告 Test Report

报告编号 SCL011029118002E

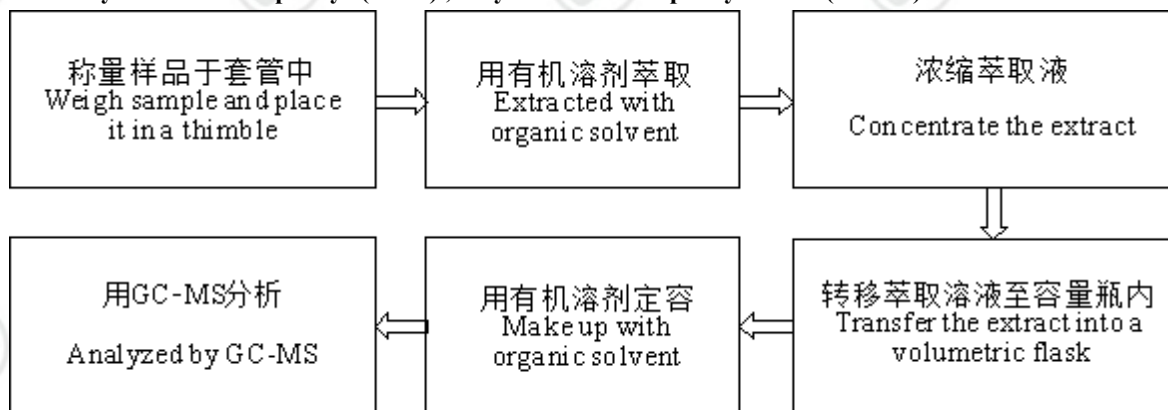
第 6 页 共 7 页

Report No. SCL011029118002E

Page 6 of 7

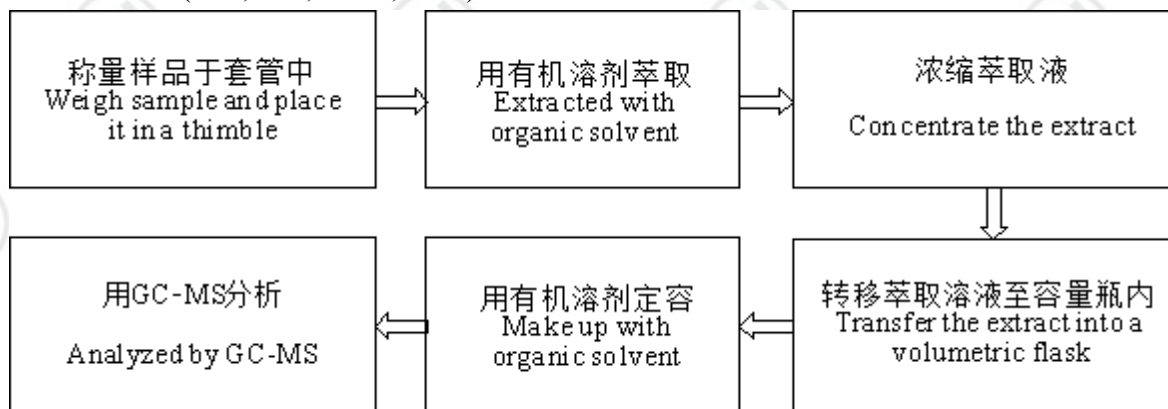
## 4. 多溴联苯(PBBs), 多溴二苯醚(PBDEs)

Polybrominated Biphenyls(PBBs) , Polybrominated Diphenyl Ethers(PBDEs)



## 5. 邻苯二甲酸酯(DBP, BBP, DEHP, DIBP)

Phthalates(DBP, BBP, DEHP, DIBP)

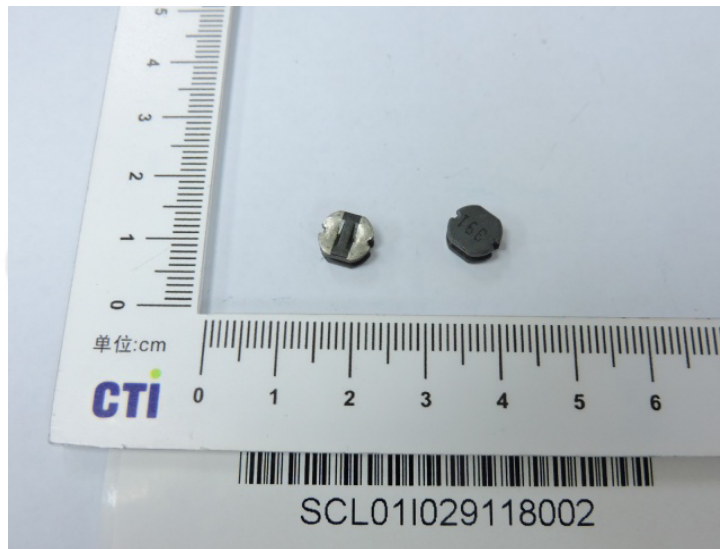


# 检测报告 Test Report

报告编号 SCL011029118002E  
Report No. SCL011029118002E

第 7 页 共 7 页  
Page 7 of 7

## 样品图片 Photo(s) of the sample(s)



\*\*\*报告结束\*\*\*

\*\*\* End of report \*\*\*

检测报告无批准人签字及“报告专用章”无效，本报告检测结果仅对受测样品负责。未经CTI书面同意，不得部分复制本报告。

The test report is effective only with both signature and specialized stamp. The result(s) shown in this report refer only to the sample(s) tested. Without written approval of CTI, this report can't be reproduced except in full.